

Accessories: Mounting unit BES 12.0-KB-602-02-12

Common Data

Version
Usable with

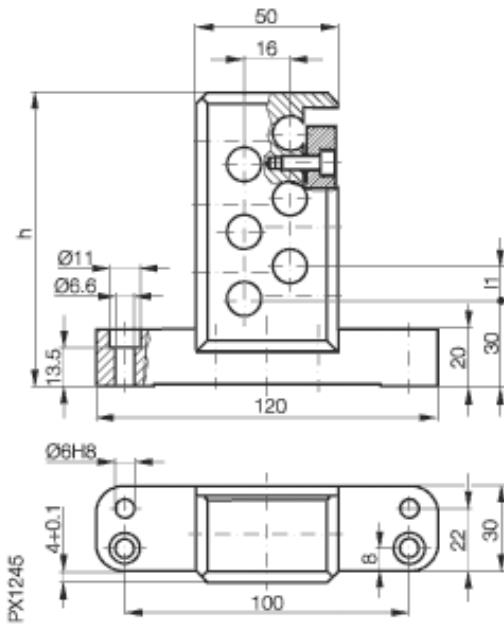
Ambient temperature

Clamp
Clamp for holding inductive
proximity switches in
cylindrical housings M12 flush
mount
-25°C...+70°C

Mechanical Data

Measurements WxHxD or Dia x D
Material
Mounting

120x30
epoxy resin - fiberglass, green
screw M5, zinc coated



Anzahl der Schaltstellen n	2	4	6
bei H = 12 mm	57	81	105
bei H = 16 mm	57	93	125

Datasheet number::

Definitions see general catalog.
If not otherwise noted, ratings according to
IEC 60947-5-2 (DIN EN60947-5-2)

Balluff GmbH
Schurwaldstrasse 9
73765 Neuhausen a.d.F.
Phone (07158) 173-0 Fax (07158) 5010

Datenblatt by CD-ROM - 04/2007

BALLUFF
sensors worldwide